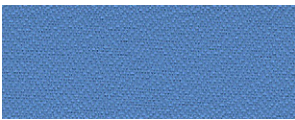


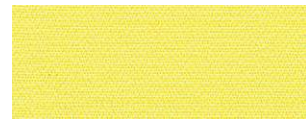
1242



1211



1242



1240



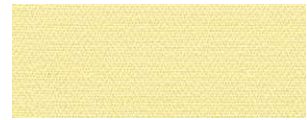
1230



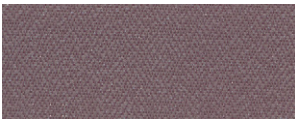
1207



1200



1241



1234



1218



1205



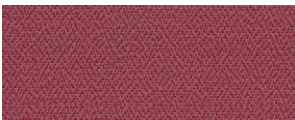
1220



1238



1206



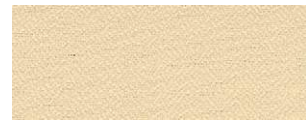
1235



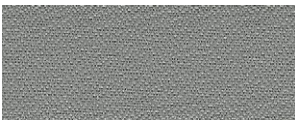
1213



1239



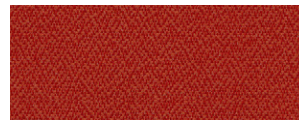
1202



1217



1243



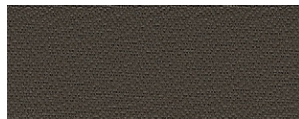
1236



1203



1215



1216



1237



1204

# base|

This semi-transparent crêpe evenly and elegantly filters the light and has excellent flame retardant properties.

Its combination of functionality and a tranquil, almost serene look makes this pleated fabric suitable for the residential as well as the contract market. Pleated fabric Basel is available in 25 plain colours.

design no.	colour	packing unit (mtr) +/- 10%		minimal fabric width (cm)	material	customs code	weight (g/m <sup>2</sup> )	material thickness (mm)	light fastness (DIN EN ISO 105-B02)	washable at 30° C	wet cleaning (sponge)	suitable for humid environment	pearlised	transparent	semi-transparent	non-transparent	black-out	flame retardant	Okotex-Standard 100	Rv - light reflection (DIN EN 410)	Av - light absorption (DIN EN 410)	Tv - light transmission (DIN EN 410)	Rs - solar reflection (DIN EN 410)	As - solar absorption (DIN EN 410)	Ts - solar transmission (DIN EN 410)	Tuv - UV transmission (DIN EN 410)	openness factor (DIN EN 410)	Fc-value (DIN EN 13363-1)	Fc-class (DIN EN 13363-1)
1200	white	32	225		100% PES	5407 6130	86	0,16	5-7	•	•	•			•			•	•	45%	3%	52%	43%	5%	52%	27%	2%	0,69	3
1202	peach	32	225		100% PES	5407 6130	86	0,16	5-7	•	•	•			•			•	•	44%	10%	46%	-	-	-	20%	-	-	3
1203	nude	32	225		100% PES	5407 6130	86	0,16	5-7	•	•	•			•			•	•	38%	22%	40%	-	-	-	18%	-	-	3
1204	orange	25	225		100% PES	5407 6130	86	0,16	5-7	•	•	•			•			•	•	29%	40%	31%	-	-	-	11%	-	-	3
1205	off white	32	225		100% PES	5407 6130	86	0,16	5-7	•	•	•			•			•	•	46%	2%	52%	-	-	-	23%	-	-	3
1206	cream white	32	225		100% PES	5407 6130	86	0,16	5-7	•	•	•			•			•	•	45%	4%	51%	-	-	-	23%	-	-	3
1207	light green	32	225		100% PES	5407 6130	86	0,16	5-7	•	•	•			•			•	•	38%	18%	44%	-	-	-	19%	-	-	3
1211	blue	32	225		100% PES	5407 6130	86	0,16	5-7	•	•	•			•			•	•	20%	55%	25%	-	-	-	18%	-	-	3
1213	grey	32	225		100% PES	5407 6130	86	0,16	5-7	•	•	•			•			•	•	33%	28%	39%	-	-	-	20%	-	-	3
1215	black	32	225		100% PES	5407 6130	86	0,16	5-7	•	•	•			•			•	•	3%	94%	3%	-	-	-	6%	-	-	3
1216	dark brown	32	225		100% PES	5407 6130	86	0,16	5-7	•	•	•			•			•	•	7%	85%	8%	-	-	-	6%	-	-	3
1217	dark grey	32	225		100% PES	5407 6130	86	0,16	5-7	•	•	•			•			•	•	18%	59%	23%	-	-	-	14%	-	-	3
1218	sand	32	225		100% PES	5407 6130	86	0,16	5-7	•	•	•			•			•	•	40%	13%	47%	-	-	-	25%	-	-	3
1220	optical white	32	225		100% PES	5407 6130	86	0,16	5-7	•	•	•			•			•	•	46%	1%	53%	-	-	-	-	-	-	3
1230	navy blue	32	225		100% PES	5407 6130	86	0,16	5-7	•	•	•			•			•	•	5%	89%	6%	-	-	-	6%	-	-	3
1234	purple	32	225		100% PES	5407 6130	86	0,16	5-7	•	•	•			•			•	•	15%	69%	16%	-	-	-	13%	-	-	3
1235	orchid	32	225		100% PES	5407 6130	86	0,16	5-7	•	•	•			•			•	•	13%	74%	13%	-	-	-	12%	-	-	3
1236	red	32	225		100% PES	5407 6130	86	0,16	5-7	•	•	•			•			•	•	10%	82%	8%	-	-	-	2%	-	-	3
1237	peach pink	32	225		100% PES	5407 6130	86	0,16	5-7	•	•	•			•			•	•	34%	30%	36%	-	-	-	18%	-	-	3
1238	khaki	32	225		100% PES	5407 6130	86	0,16	5-7	•	•	•			•			•	•	32%	34%	34%	-	-	-	17%	-	-	3
1239	taupe	32	225		100% PES	5407 6130	86	0,16	5-7	•	•	•			•			•	•	15%	68%	17%	-	-	-	11%	-	-	3
1240	bright yellow	32	225		100% PES	5407 6130	86	0,16	5-7	•	•	•			•			•	•	46%	6%	48%	-	-	-	-	-	-	3
1241	soft yellow	32	225		100% PES	5407 6130	86	0,16	5-7	•	•	•			•			•	•	46%	6%	48%	-	-	-	20%	-	-	3
1242	turquoise	32	225		100% PES	5407 6130	86	0,16	5-7	•	•	•			•			•	•	29%	41%	30%	-	-	-	17%	-	-	3
1243	mouse grey	32	225		100% PES	5407 6130	86	0,16	5-7	•	•	•			•			•	•	22%	55%	23%	-	-	-	15%	-	-	3